

Thermal Commercial Swing Door Systems



Index

Pg 1 | Systems

Pg 2 | Associated benefits

Pg 3 | Technical Specification

Pg 4 | 4100+ data sheet



Horton Automatics Limited | *The Automatic Choice* |

Tel: 01952 678548 Email: sales@horton-automatics.ltd.uk Web: www.hortonautomatics.co.uk

Thermal Commercial Swing Door Systems



DESIGN OPTIONS:

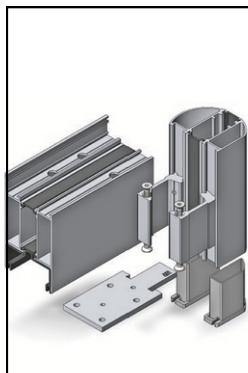
- Single and dual colour to any standard RAL / BS colour reference
- Double glazing 28mm-47mm thick
- Manual pivot door
- Automatic pivot door
- Single or multipoint manual lock
- Range of DDA compliant thresholds
- Anti-finger-trap door stile
- Electric locking options

Horton 4100-Plus swing door systems; a thermally efficient product designed for installation in education, healthcare, retail, and commercial settings, where enhanced building regulations and security standards are of great importance. This fully compliant Thermal Commercial Pivot Door is designed for high traffic footfall, available with additional ironmongery tested to PAS24 security standards.

The DDA compliant door system is compatible with the Kestrel Thermal Framing we use for our screenwork system, providing uniform design and a turnkey solution.

Slimline profiles minimise sight-lines, offering enhanced visual appeal, whilst ensuring excellent thermal performance all year round.

A U-Value of 1.8 is achievable, based on using 28mm laminated double glazed units.



PAS24 CONFIGURATIONS:

- Single and double door
- Single door access control
- Single door panic hardware

SYSTEMS:

- Thermally broken manual swing door systems in single and paired configurations
- Thermally broken automated swing door systems combining the heavy-duty kestrel doors with our Horton 4100-Plus automation. Available in single and paired configurations



Horton Automatics Limited | **The Automatic Choice** |

Tel: 01952 678548 Email: sales@horton-automatics.ltd.uk Web: www.hortonautomatics.co.uk

When might a thermally broken door be required?

Thermally broken aluminium doors are a great solution for buildings requiring high-levels of thermal insulation, without sacrificing durability and easy access. Below are some of the associated benefits of selecting thermally broken aluminium doors:



Energy Efficiency:

The use of thermal breaks in an aluminium frame reduces the heat transfer, resulting in a more energy efficient building.



Durability:

Aluminium is a heavy-duty, lightweight material able to withstand hard weather conditions, ensuring longevity and robustness.



Aesthetics:

Aluminium doors are versatile, able to be customised to fit any design style, with the option of a range of colours and finishes.



Accessibility:

Aluminium doors are easy to operate and can be fitted with a variety of hardware options, such as automatic operators to provide ease of access to all users.



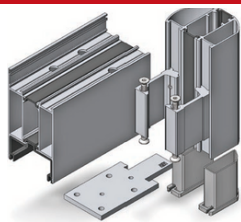
Sustainability:

Aluminium is a highly recyclable material, making it an eco-friendly option for buildings.

Horton Automatics Limited | *The Automatic Choice* |

Tel: 01952 678548 Email: sales@horton-automatics.ltd.uk Web: www.hortonautomatics.co.uk

Technical Specification



Application

Commercial, new build, and refurbishment.

Single Door

Double Door

Maximum Width

1100mm

2200mm

Maximum Height

2500mm

2500mm

Jointing

Mechanical

Mechanical

Internally beaded option

Yes

Yes

Glazing options

Will accept insulating glass units and infill panels 28-47mm thick.

Finishes

Mill finish.
SAA
Polyester Powder Coat paint finish

Option

Single or dual colour to any RAL/BS colour

Design standards

BS EN 12020-2:2001 Aluminium and aluminium alloys, extruded precision profiles.
BS 3987:1991 Specification for anodic oxide coatings.
BS EN 12206-1:2021 Paints and varnishes, coating of aluminium and aluminium alloys.
BS 4873:2016 Specification for aluminium alloy windows and doorsets.
BS EN 14351-1:2006+A2:2016 Windows and doors, performance characteristics.
BS EN ISO 10077-2:2017 Thermal performance of windows, doors and shutters.
PAS 24:2016 Enhanced security performance requirements for doorsets and windows.

Application

Manual or automatic (With the Horton 4100-Plus Operator)
Please refer to separate datasheet

Manual Locking

Single or multipoint manual locking

Electric Locking

Single or double maglocks
ES8000 Trimec V-Lock (PAS24 Compliance on a single door in the electrically locked state).
Single electric strike lock

Automatic Options

Radar, Push button, Touchless switches, Access Control compatible

Safety barriers

Available supplied & fitted:

- Aluminium powder coated with glass infill panel, freestanding or wall to floor mounted.
- Stainless steel with glass infill panel, freestanding or wall to floor mounted.
- Bollards with integral push to open buttons also available.

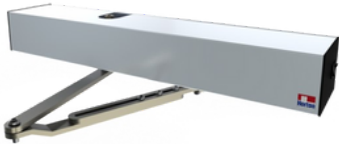
Horton Automatics Limited | *The Automatic Choice* |

Tel: 01952 678548 Email: sales@horton-automatics.ltd.uk Web: www.hortonautomatics.co.uk

Swing Door Operator Data Sheet



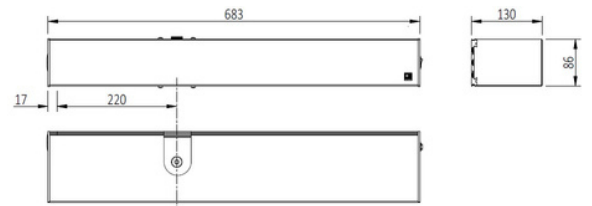
4100+ universal swing operator



Door/Weight Payload 4100+ universal swing door operator for continuous and intensive service. A compact design with power, suitable to power large and heavy doors.

Key Features

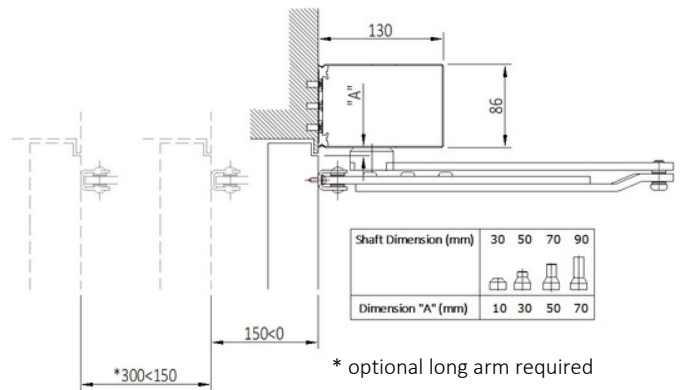
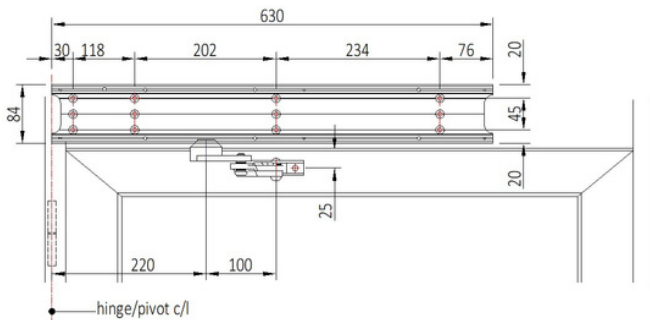
- Heavy duty unhandled design
- Standard satin anodised faceplate (other surface finishes are available upon request)
- Different output shafts available
- Push and Pull arm configurations
- Synchronised operation for paired doors
- Full energy, low energy and manual operation options
- Built in 3-way logic switch on endcap (option 3-way mechanical key switch available)
- Built in on/off switch on endcap
- Compatible with different activation trigger devices such as radar, push pad and access control
- Compatible with different locking, such as maglock and electric strike
- Optional connection to BMS (Building Management System)
- High torque value
- Force adjustment in the closing direction to suit various lock types
- Parameter adjustments for opening and closing in different environmental conditions, wind or pressurised rooms



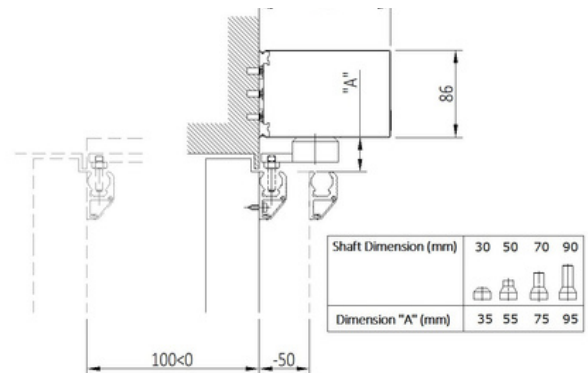
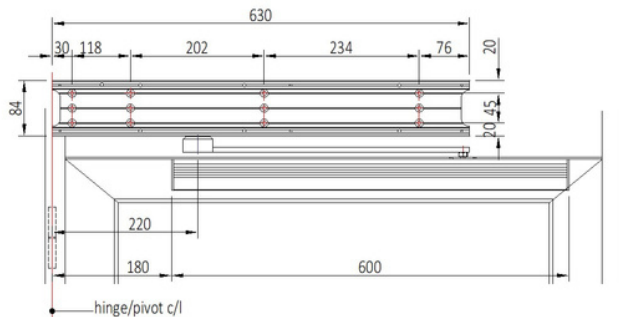
Door/Weight Payload



Pull Arm



Push Arm



105x175mm

Technical Data

Dimensions (w x h x d)	683x86x130mm	Power external devices	12V DC - 12W Max
Weight of drive unit	11Kg	Electric lock power	12/24V DC-15W Max
Operating Temperature	-10oC > +55oC	Door leaf width	700-1400mm
IP rating	IP40	Maximum door leaf weight	250kg
Service	Continuous	Maximum opening angle	110o
Power supply	230V AC 50/60Hz	Door control	Power open, Close on spring
Power rating	85W	Adjustable Spring Tension	EN4-EN6

¹door weight dependant

²door leaf width dependant



Horton Automatics Limited | **The Automatic Choice** |

Tel: **01952 678548** Email: sales@horton-automatics.ltd.uk Web: www.hortonautomatics.co.uk