

# Data Sheet

## 2021+ and 2021+HD Sliding Door Operator

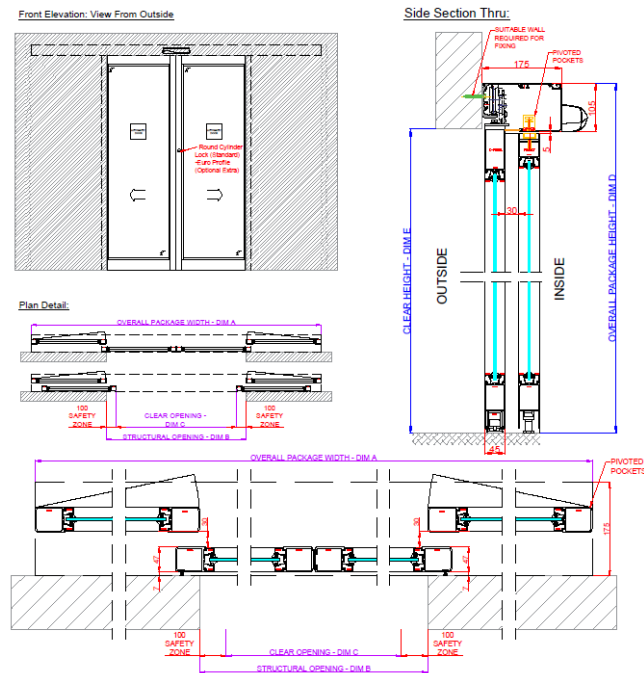
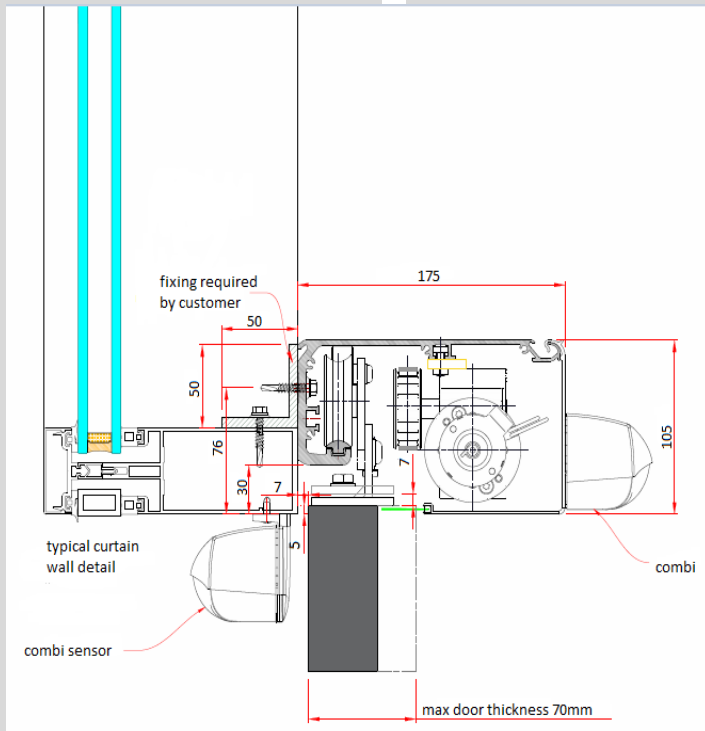


*2021+ slim-line sliding door operator for continuous and intensive service. A compact design with power, suitable to operate large and heavy doors*



### Key Features

- Slim-line design
- Designed for high traffic entrances
- PPC cover to any standard RAL Colour
- Available in Standard and HD version
- Available as operator only, or with; standard commercial narrow style Aluminium framed doors, ultra narrow European style Aluminium framed doors, thermally broken commercial Aluminium framed doors and all-glass Elegant® design.
- 5 position key switch; 2 way operation, 1 way exit, hold open, summer/winter opening
- Connectivity to safety sensors; also monitoring and conformity to BS EN 16005
- Compatible with different activation trigger devices such as radar, push pad and access control
- Available with integral electro-mechanical locking
- Optional connection to BMS (Building Management System) and Fire Alarm
- Monitored Power battery backup for fail safe operation
- New carriage with two rollers; increased diameter and adjustable
- Parameters setting directly on board by using push button display
- Framed and Frameless Pivoted Pocket safety screens available, to fully enclose door leaves through travel area



### Technical Data

Dimensions (h x d)	105x175mm	Power external devices	15V DC—12W Max
Weight	11 kg/m	Rated Power	150 W
Operating Temperature	-10°C > +55°C	Maximum Opening Speed	1 wing: 70cm/s 2 wing: 140 cm/s
IP rating	IP20	Maximum Closing Speed	70% of Opening Speed
Service	Continuous	Locking	Electro-mechanical
Power supply	230v AC 50/60Hz	Maximum Payload	1 Wing: 140 kg (HD 160kg) 2 Wing: 100k+100g (HD 140k+140g)
Power Unit	24 Vdc Motor with integrated encoder	Conformity	CE



**Horton Automatics Ltd**  
 Unit A, Hortonwood 31, Telford,  
 Shropshire, TF1 7YZ  
 Tel: 01952 670169  
 Fax: 01952 670181  
 Web: [www.horton-automatics.ltd.uk](http://www.horton-automatics.ltd.uk)  
 Sales: [sales@horton-automatics.ltd.uk](mailto:sales@horton-automatics.ltd.uk)

